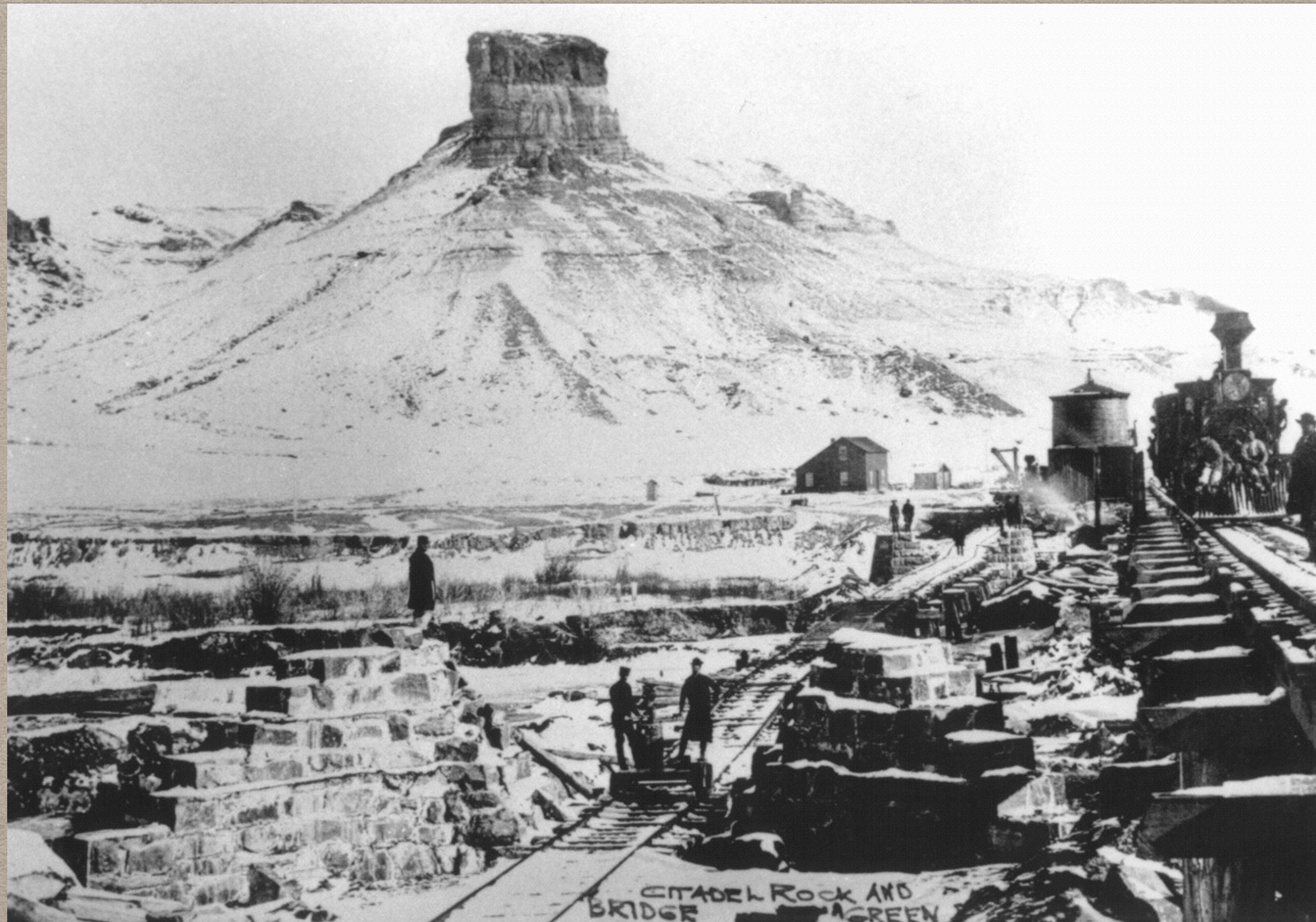


*PACIFIC RAILROAD, GOLD RUSH & MORMON'S TRAIL*



*Union Pacific Railroad', Pont sur la Green River, Wyoming (Castle Rock) 1868*



*Union Pacific Railroad', Pont sur la Green River, Wyoming (Castle Rock) 1868*



*Mine d'or, Boren's Gulch, La Plata County, Colorado*



*Chercheurs d'or, Pikes Peak*

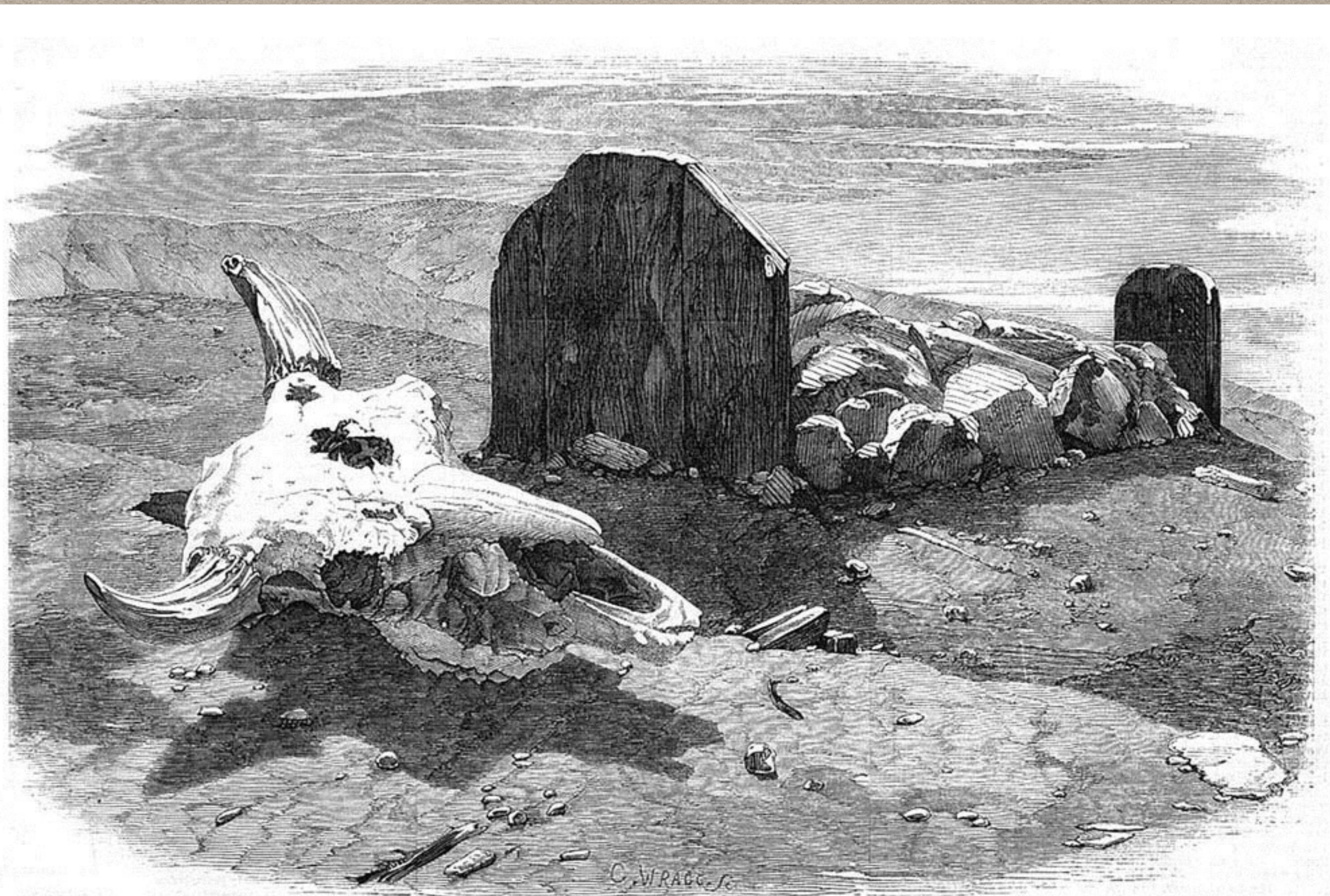


*Bodie, Californie*

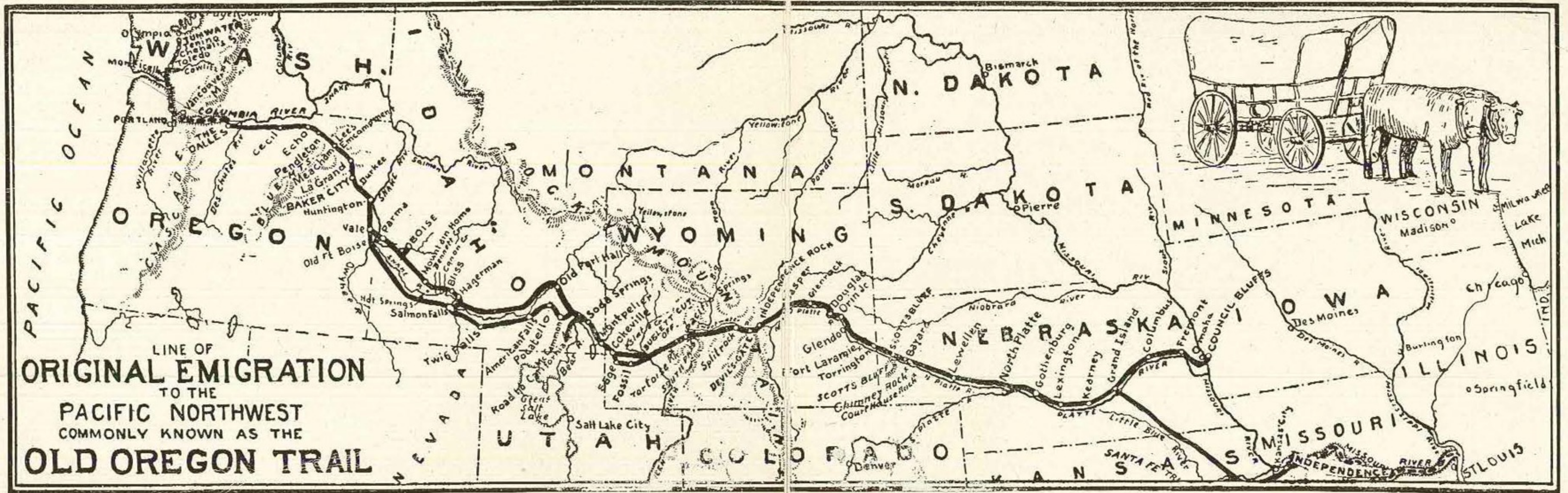


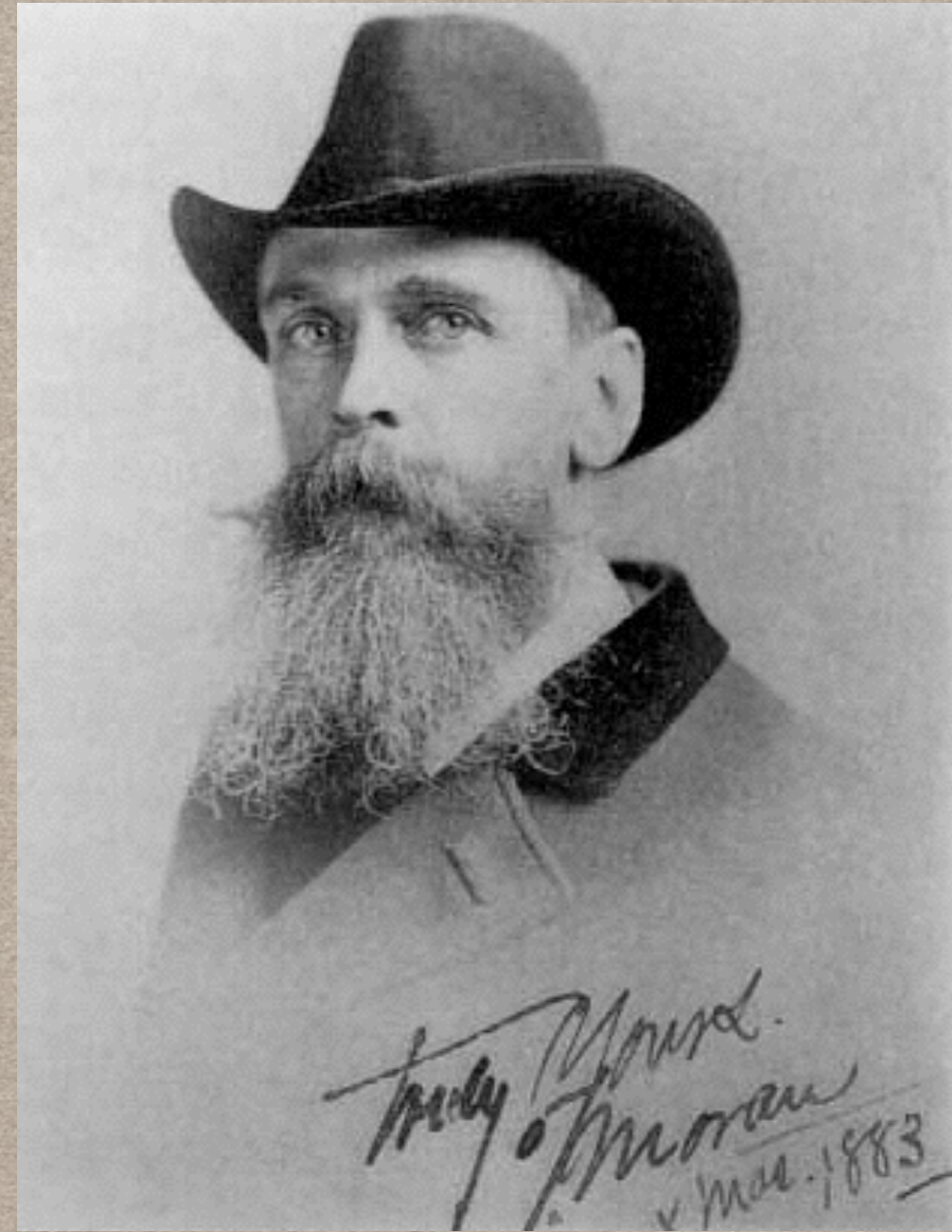






GRAVE AND BUFFALO SKULL PASSED ON THE ROUTE.





Thomas MORAN (1837-1926)



Thomas MORAN (1837-1926) *The Grand Canyon of the Colorado*, 1904, Huile sur toile, 75 x 152.4 cm



Thomas MORAN (1837-1926) *Cliffs of Green River (in southwestern Wyoming)*, 1874



Thomas MORAN (1837-1926) *Entrance to the Grand Canal, Venice*, 1906



Thomas MORAN (1837-1926) Gondole des Moran à ... Hook Pond (New York)

## *LES MISSIONS DU GEOLOGICAL SURVEY\**

KING : Missouri, Nebraska, Wyoming, Colorado, Californie - (géologue)

HAYDEN : Missouri, Nebraska, Wyoming, Colorado, Californie - (géologue)

POWELL : 1867 and 1868, Rocky Mountains, Colorado, Utah - Interior Dpt - (Professeur de géologie)

Georges WHEELER : 1869 Nevada, Colorado, Arizona - War Dpt - (Lieutenant)

*\* Survey : enquête*





*Ferdinand Van de Veer HAYDEN (géologue) 1829-1887*

*Geological Survey  
Red Buttes, Wyoming, 1870  
Hayden est assis jambes croisées,  
W. H. Jackson est debout à droite*





*Carleton E WATKINS  
(1829-1916)*

*Né à New York et mort en Californie*



*Carleton E WATKINS (1829-1916)  
Bridal Veil Fall, Yosemite, 1873*

Carleton E. WATKINS  
Galen Clark devant Grizzly Giant sequoia  
Mariposa Grove, Yosemite



C. E. Watkins



Carleton E. WATKINS  
*Yosemite River, looking West-SW*

© C. Watkins

CANYONS  
OF  
THE COLORADO

BY  
J. W. POWELL, PH.D., LL.D.,

*Formerly Director of the United States Geological Survey. Member of the National  
Academy of Sciences, etc., etc.*

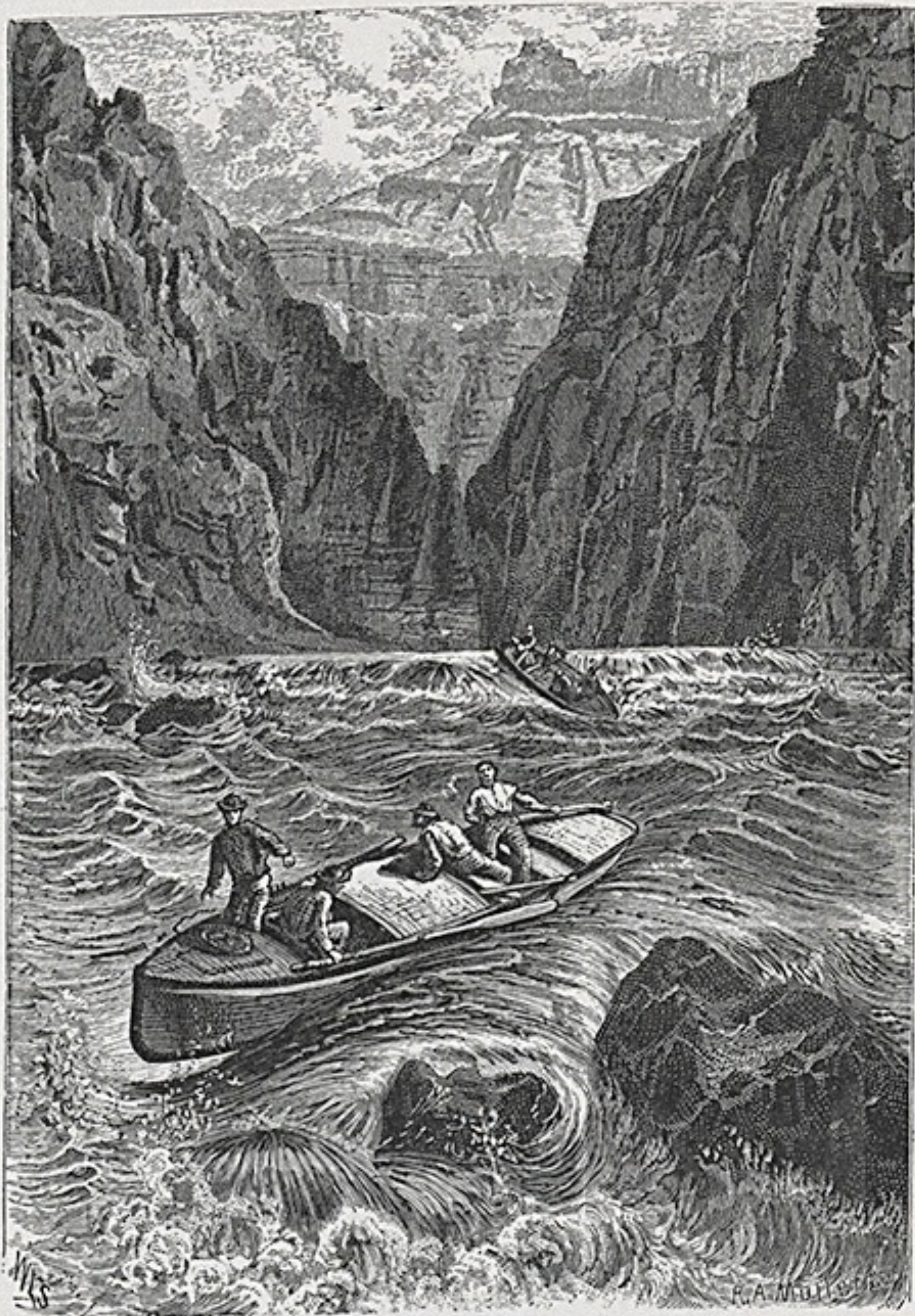
WITH MANY ILLUSTRATIONS.



MEADVILLE, PA  
FLOOD & VINCENT  
The Chautauqua-Century Press  
M DCCC XCV



LAND OF THE STANDING ROCKS.



RUNNING A RAPID.







*Expédition Powell,  
John Wesley, Vue stéréoscopique  
Views on the Green River, 1871*



*Timothy O'SULLIVAN  
(1840-1882)  
Né en Irlande, mort à  
Staten Island*



*Timothy O'SULLIVAN (1840-1882)  
Browns Park, Colorado,*

© Timothy O'Sullivan



*Timothy O'SULLIVAN (1840-1882)*  
*Canyon de Chelly, Arizona, 1873*



© Timothy O'Sullivan

*Timothy O'SULLIVAN  
(1840-1882)*

*Two men sit looking at  
headlands north of the  
Colorado River Plateau, 1872.*



Timothy O'SULLIVAN (1840-1882)  
White House ruins,  
Canyon de Chelly, Arizona, 1873

© Timothy O'Sullivan



*Sullivan dans le train "Picture"*



*L'assistant de William Henry  
JACKSON et sa mule*



*William Henry JACKSON  
Flaming Gorge, Green River, 1870*





*William Henry JACKSON  
Oklawaha River, Plaques Mamouth  
17x22 inches*





*W.H.Jackson, et son assistant Charles Campbell  
avec leur chambre noire, vers le Grand Teton, 1872*